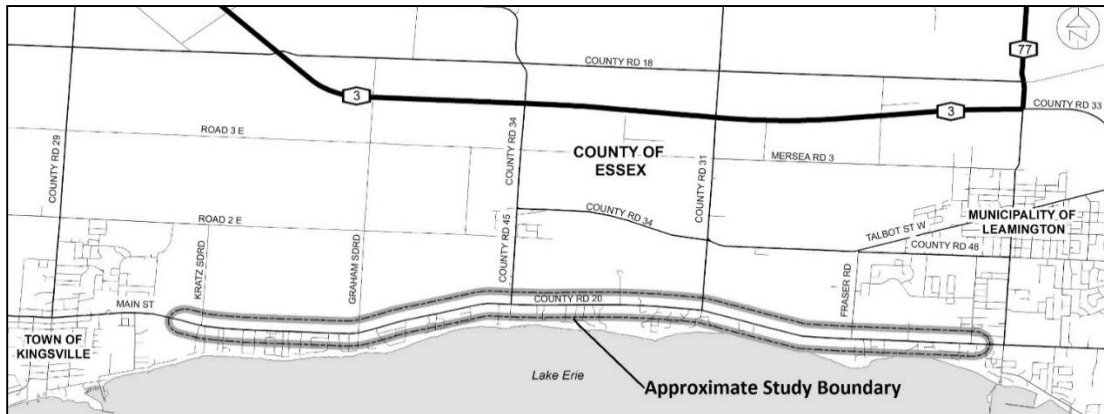


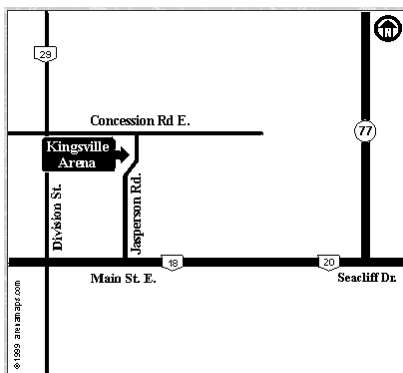
Notice of Public Meeting #1

County Road 20: Environmental Assessment and Preliminary Design

The County of Essex (County) is undertaking a Municipal Class Environmental Assessment (EA) study to assess corridor improvement alternatives for County Road 20, from Kratz Sideroad, in the Town of Kingsville, to Sherk Street, in the Municipality of Leamington. The map below shows the approximate study area. The study will be completed in accordance with the planning and design process outlined in the *Municipal Class Environmental Assessment* (October 2000, amended in 2007, 2011 & 2015), under the *Ontario Environmental Assessment Act*.



The County is making preliminary study material and plans available for public review at the upcoming Public Information Centre (PIC) on **Tuesday, November 15, 2016 at the Kingsville Arena Complex located at 1741 Jasperson Road in Kingsville from 3:00 p.m. to 8:00 p.m.** (see map inset for the location of the PIC).



The purpose of this PIC is to review information on the study process, background information and studies that have identified the need for improvements and to obtain input from the public on the recommended alternative solutions to address the problems and opportunities identified in the study area.

We are interested in hearing from you!

Dillon Consulting Limited has created a study website (www.CR20.ca) to share all study information. For further information on this project and/or to be added to the project mailing list, please visit the study website and send any inquiries to CR20@dillon.ca or contact the undersigned:

Jane Mustac, P.Eng., County of Essex, 519-776-6441 ext. 1397

John Zangari, P.Eng., Dillon Consulting Limited, 519-948-5000 ext. 3234

Under the *Municipal Freedom of Information and Protection of Privacy Act* and the *Ontario Environmental Assessment Act*, with the exception of personal information, all comments will become part of the public record and will be released, to any person if requested. Comments and information received will be maintained on file for use during the project and may be included in project documentation.