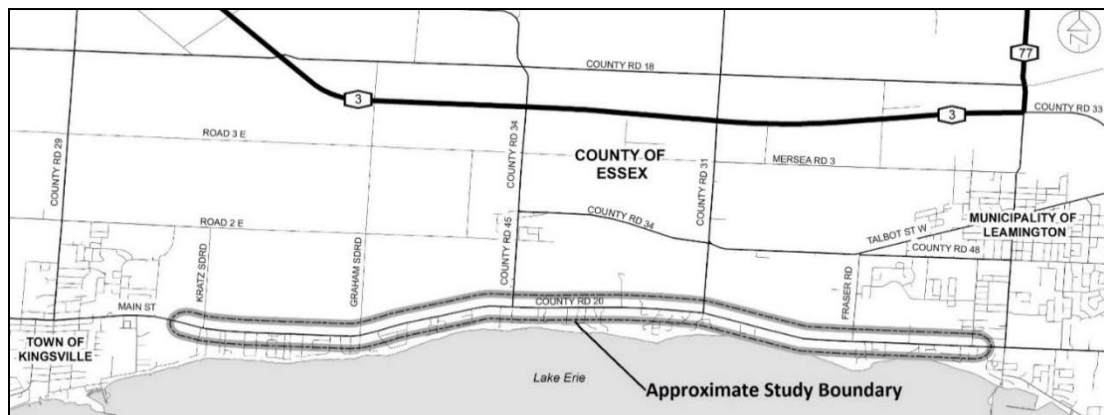


Notice of Public Information Centre #2

County Road 20: Environmental Assessment and Preliminary Design

The County of Essex (County) is undertaking a Municipal Class Environmental Assessment (EA) study to assess corridor improvement alternatives for County Road 20, from Kratz Sideroad, in the Town of Kingsville, to Sherk Street, in the Municipality of Leamington. The map below shows the approximate study area. The study will be completed in accordance with the planning and design process outlined in the *Municipal Class Environmental Assessment* (October 2000, amended in 2007 & 2011), under the *Ontario Environmental Assessment Act*.



Based on input received at the first Public Information Centre (PIC) (held in November 2016), two new alternative solutions were developed and evaluated. The County will present the additional alternatives, the evaluation of alternatives and the recommended preferred design option for the improvement of County Road 20 at the upcoming PIC on **Thursday, August 17, 2017 in the front foyer of the Leamington Kinsmen Recreation Complex located at 249 Sherk Street in Leamington from 3:00 p.m. to 8:00 p.m.** (see map inset for the location of the PIC).



We are interested in hearing from you!

Dillon Consulting Limited has created a study website (www.CR20.ca) to share all study information. The website has recently been updated to provide information on the two new alternative solutions. For further information on this project and/or to be added to the project mailing list, please visit the study website and send any inquiries to CR20@dillon.ca or contact the undersigned:

Jane Mustac, P.Eng., County of Essex, 519-776-6441 ext. 1397

Don McKinnon, RPP, Dillon Consulting Limited, 416-229-4647 ext. 2355

Under the *Municipal Freedom of Information and Protection of Privacy Act* and the *Ontario Environmental Assessment Act*, with the exception of personal information, all comments will become part of the public record and will be released, to any person if requested. Comments and information received will be maintained on file for use during the project and may be included in project documentation.